


**THE ALUMNAE COUNCIL:
WOMEN OF VISION FOR MICHIGAN**

Alumnae Scholarships
University of Michigan





My name is Seeker.
I walk a Far Off Trail
Between the distant stars and dawn.
Sometimes I find
 a Blessed Sign prepared
By one who wandered here before.
Who would she be?
Sometimes I know. More often
I know not. I think –
“Some Seeker like myself
Who traveled lonely
 yet bethought
To leave this Sign for me.”
I am encouraged.

Friend, along this Trail
 my heart is warmed
Beside your Kindly Fire.
 I thank you for it.

Keewaydinoquay M. Pakawakuk Peschel
Alice Crocker Lloyd Scholarship Recipient





The Alumnae Council: Women of Vision for Michigan

In 1917, a group of U-M alumnae envisioned an organization to promote the interests of women in the University of Michigan community, and founded The Alumnae Council.

Their first undertaking was to spearhead a \$1 million fund-raising campaign to erect a center on the U-M campus that would serve the social and cultural activities of all Michigan students. The Michigan League stands today as a vibrant tribute to the Council's ingenuity and success.

The Alumnae Council then turned its energies toward endowing scholarships that would sustain self-supporting women students for the present, and the future.

Three million dollars in gifts to endow thirty funds have come from individuals, through fund-raisers sponsored by U-M alumnae clubs, and from annual donations to the Alumnae Council Birthday Greeting.

A number of alumnae bequeathed part of their life's fortune to endow their support for future generations of Michigan women, and several endowments were established by friends and family in honor of women who spent their careers helping others.

We hope that the profiles of the women honored here will give you a better understanding of what the University of Michigan has meant to so many women through the years. Their stories – as well as the scholarships they endowed and inspired -- are a source of encouragement to young Michigan women, both in their studies and in their careers.

The vision does not end here. Your support of the Alumnae Council programs and scholarships ensures growth and future opportunities for women who want to attend the University of Michigan. We hope that you too will be motivated to make a contribution to the Alumnae Council Scholarship Program.

The Council meets twice a year and membership is open to all.

FOR MORE INFORMATION

To contact or find out more about the U-M Alumnae Council and its programs, please visit:

www.alumnaecouncil.org

For scholarship application information, please visit the U-M Office of Financial Aid website at

**[www.finaid.umich.edu/
types_of_financial_aid/
Scholarships/scholfind.asp](http://www.finaid.umich.edu/types_of_financial_aid/Scholarships/scholfind.asp)**

and follow the Alumnae-Alumni links, or call the OFA Scholarship Unit at (734)763-6600

"I view scholarships as a type of investment – an outsider investing in me. Thank you for awarding me this scholarship and making a secure investment. I will continue to strive for academic excellence through a devotion to my studies, research, and extracurricular activities.

This investment in my education will prove to be worthy."

Aaron, Forman Recipient

The Alumnae Council Birthday Greeting Campaign

This annual campaign is an appeal exclusively to alumnae and women who support the U-M.

Eula dePriest Marcks ('33) originated the Birthday Greeting Campaign in 1961, inviting alumnae to contribute one penny for every year of the University's history (today's request seeks twenty-five cents per year). More than \$1 million has been donated in support of scholarships as well as other programs of interest, among them the Center for Continuing Education of Women, Lydia Mendelssohn Theatre, Matthaei Botanical Gardens, the Michigan League, and Henderson House Cooperative.

Other Scholarship Opportunities

In addition to the Alumnae Council endowments, several U-M alumnae clubs provide from \$80,000 to \$100,000 (collectively) in support of students in their local areas:

Ann Arbor Alumnae Club – Lucile B. Conger Group
Ann Arbor Alumnae Club – Alva Gordon Sink Group
Ann Arbor Alumnae Club – Sara Browne Smith Group (Emerita)
Ann Arbor Alumnae Club – Margaret Lawler Waterman Group
Benton Harbor-St Joseph Alumnae Club
Birmingham Alumnae Club
Detroit Association of U-M Women
Grand Rapids Federation of U-M Alumnae Clubs
Greater Lansing U-M Club
Jackson Alumnae/Alumni Club (Emerita)
Macomb County Alumnae Club
Saginaw Alumnae Club

ALPHA XI DELTA

Established 2001 – Funded by the Alpha Xi Delta Fraternity, a women’s organization, to provide scholarships for undergraduate women.
Recipients: 1st to be awarded for 2003-04
Endowment: \$50,000

The University of Michigan chapter of this undergraduate women’s social fraternity, established in 1920, was in continuous operation for over 80 years. The purpose of Alpha Xi Delta is to cultivate the ideals of personal development: scholarship, true friendship, and civic responsibility. To that end, its more than 1200 members established this scholarship foundation.

BENSON, GERTRUDE C.

1916 AB, 1922 AM – A dedicated alumna
Established 1993 – Bequest of Ms. Benson for merit and need based scholarships for graduate and undergraduate women students.
Recipients: 46 \$55,600 Awarded
Endowment: \$ 48,000

A native of Lansing, Michigan, she returned there following graduation from the U-M to teach mathematics at Lansing Sexton High School where she became known as “a tough teacher.” As a leader in her local alumnae club – Gertrude’s greatest interest was in raising scholarship funds to support area students attending her alma mater.

BLETCHER, EDITH M. KEILEY

Staff – Made a career of passing a gift along
Established 2002 – Funded by the Alumnae Council to provide merit and need based scholarships for undergraduate students, with preference for Benzie & Hillsdale (MI) county residents.
Recipients: 1 \$2,000 Awarded
Endowment: \$55,125

A friend’s gift of \$100 when Edi set off for college turned into a life dedicated to providing assistance to U-M students seeking financial help – and a friendly ear – during her 38 year U-M career (1964-2002). As Director of Student-Alumni Services, Edi administered alumnae/alumni scholarships and University merit awards, and developed nine new endowments for the Council. While with Financial Aid she worked to make scholarship information more accessible for students, and played a key role in shaping the Shipman Society and Scholarship program.

BUZBY, ETHEL M.

1915 AB – Cherished her years at Michigan
Established 1975 – Bequest of Ms. Buzby, to assist out-of- state undergraduate women, with preference for residents of Pennsylvania and New Jersey.
Recipients: 65 \$93,000 Awarded
Endowment: \$ 28,000

Imagine a young girl coming to Ann Arbor, Michigan in 1911 from Woodstown, New Jersey. Ethel Buzby cherished her years at the University of Michigan, where she played on the Women’s basketball team and acted in several productions of the University’s Comedy Club.



EDITH M. KEILEY BLETCHER

I would like to give my greatest appreciation and thanks for selecting me as a scholarship recipient... Thank you for believing in me and supporting me. Your support has given me the inspiration to follow the path of helping others, and to making the world an easier environment in which to live. I am forever grateful.”

Carmen, Welker Recipient

“I am finally realizing a dream that I perceived as impossible; to earn a Bachelor of Science degree in a field that I truly love. The support I receive from this scholarship makes me realize that there are others that also believe in my dream. Your support only reinforces the struggle to overcome the odds that many women face. It proves to me and to others in my situation that if one strives to do their best, they will find the means to realize their dreams and their hard work will be rewarded.”

Lois (UM-Flint), Seeley Recipient

COLLEGIATE SOROSIS -

Alumnae Council Scholarships

Established 2002 – Funded by the Collegiate Sorosis Foundation for merit and need based undergraduate scholarships for women (♂ male legacies).

Recipients: 2 \$2,900 Awarded

Endowment: \$100,750

Collegiate Sorosis was established as a local sorority in 1886, to promote friendship and encouragement among women of literary, artistic, and scientific pursuits. The only chapter was to be at the University of Michigan, and it remained a local sorority until it was closed in 1991. Distinguished members include Sarah Caswell Angell, Margaret Knowlton Bursley, and Alice Crocker Lloyd, among many others.

CONGER, JULIA HENNING

1918 AB – Grand Rapids Alumnae Group named in her honor

Established 1963 – Bequest of Ms. Conger and memorial gifts from family and friends to provide undergraduate scholarships for young women from the Grand Rapids area. (Recipients are selected by the Grand Rapids Federation of U-M Alumnae Clubs)

Recipients: 89 \$273,150 Awarded

Endowment: \$794,000

While following the more typical pursuits of women of her time – those of wife and mother – Julia Conger was also an energetic leader of her U-M alumnae club, later named in her honor. All four of the Congers' sons earned degrees from the University of Michigan and became generous and loyal supporters of U-M.



LUCILE BAILEY CONGER

CONGER, LUCILE BAILEY

1904 AB – Lived in Tsarist Russia from 1910 to 1912

Established 1961 – Alumnae Council Birthday Greeting Campaign Memorial Gifts to provide scholarships for graduate studies at U-M for women with University of Michigan undergraduate degrees.

Recipients: 86 \$94,650 Awarded

Endowment: \$ 38,425

After their experience living in Tsarist Russia, Lucile and her husband, an Associated Press correspondent, were assigned to Berlin for ten years. They returned to Michigan where Lucile became active in the local alumnae club. From 1932 to 1947 she was employed as Alumnae Secretary and fostered much growth in alumnae activities and support for scholarships. She also led the alumnae in starting Henderson House, a cooperative for women on Hill Street.

CONGER, PAULINE M.

Conger Family Memorial

Established 1992 – Gift of R. Gilbert Conger for merit and need based undergraduate scholarships.

Recipients: 47 \$75,000 Awarded

Endowment: \$ 214,280

Pauline Mansfield married into the University of Michigan family. Her husband, Gil Conger, is one of four sons of Julia H. and Ralph G. Conger, all of whom are Michigan graduates with multiple degrees. Pauline earned her B.S. in 1945 from the State University of Iowa.

DAVIS, GLADYS E.

1931 AB, 1933 AM – Thumb Area farm girl to world traveler

Established 1994 - Bequest of Ms. Davis, for undergraduate women residents of the state of Michigan.

Recipients: 19 \$35,500 Awarded

Endowment: \$ 67,790

Gladys grew up attending a one-room school. Her simple farm background during the Great Depression and her academic success contributed to give her the character traits for which she would be remembered: scholarship and a very frugal lifestyle. Her one extravagance, world travel, was tied to her upbringing as she toured Europe and Asia with farm groups, learning about the agrarian-related aspects of the lands she visited. Graduating Phi Beta Kappa from U-M in 1931, she earned her AM two years later. Gladys taught at Hazel Park High School for 40 years, leaving only when "it wasn't fun anymore."

DEMALINE. SUE VOGT

Staff – Versatile, quick-witted, exceptional colleague and friend

Established 1993 – Bequest of Ms. Demaline to provide undergraduate scholarships for working women, especially full-time U-M staff members.

Recipients: 28 \$86,700 Awarded

Endowment: \$ 130,813

Sue interrupted her U-M education to begin a 39-year career as Assistant Editor of Michigan Alumnus magazine. Sue was never able to return to her studies, but has generously provided that opportunity for others: Sue's will endowed a scholarship to assist working women to attain their U-M undergraduate degrees.

ELLIOTT, LUCY E.

1903 AB, 1920 AM – A forceful leader in the field of progressive education

Established 1931 – Memorial gifts to provide scholarships for graduate studies at U-M, or elsewhere, for women with University of Michigan undergraduate degrees.

Recipients: 115 \$125,236 Awarded

Endowment: \$30,835

Lucy Elliott combined a love of scholarship with great common sense. The Phi Beta Kappa 1903 U-M graduate would become the first woman principal of a Detroit intermediate school (Sharrad) and would also hold several other posts in Detroit and at the U-M with distinction. Following her untimely death resulting from an automobile accident in 1930, there was an outpouring of tributes to fund a cherished interest of hers to help needy, self-supporting girls at the University of Michigan.

"I am writing this note to extend the warmest thanks on behalf of my family and me for being selected to receive such a generous scholarship from the Alumnae Council. I hope, in the coming years, to be able to give such a generous gift to other Michigan students seeking financial aid. I only wish Ms. Sue Ann Demaline could have had the opportunity to see how much this has meant to me."

Robyn, Demaline Recipient



JULIA EMANUEL

EMANUEL, JULIA

1889 PhC, 1951 MS (Hon) – The only woman to graduate from the School of Pharmacy in the Class of 1889

Established 1965 – Bequest of Ms. Emanuel, for graduate scholarships for women who lived in Henderson House their junior and senior years at U-M, recipients may study elsewhere.

Recipients: 86 \$130,000 Awarded

Endowment: \$ 72,923

Julia's career was influenced by her doctor father, who rode through rural Ohio on horseback to visit his patients, and her mother who, after his death in 1876, took over his pills and medicines and opened a pharmacy to support her family. Julia Emanuel owned and operated Emanuel Drug Store in Fort Wayne, Indiana, from the 1890s until 1942.

ENGLAND, H. CATHERINE

1935 AB – A True Blue Alumna

Established 1976 – Bequest of Ms. England, to provide scholarships for Jackson County (MI) women to enable them to attend the University of Michigan.

Recipients: 29 \$ 33,550 Awarded

Endowment: \$ 15,893

A member of the Alumnae Council Scholarship Selections Committee for many years, Catherine sought applicants with high performance standards. She had a keen business sense and was interested in the political and social changes of the 1950s and 1960s, urging young women to take advantage of these changes by exploring new fields and careers.

FAIRMAN, M. LOUISE

1896 AB – A founding member of the U-M Alumnae Club of Chicago

Established 1918 – Funded through a campaign of the Chicago Alumnae (renamed in honor of Fairman in 1949) to provide undergrad and graduate scholarships for Chicago (IL) area women at U-M.

Recipients: 68 \$ 82,000 Awarded

Endowment: \$ 28,410

Louise Fairman was a valued alumna with wide interests. As a founding member of the U-M Alumnae Club of Chicago, she was devoted to helping students needing aid and encouragement. She gave generously of her time and support to raise funds for this endowment.

GAY, LORAIN

1929 AB, 1950 AM – Known by her colleagues as “a true professional”

Established 1974 – Bequest of Ms. Gay, to provide scholarships for in-state undergraduates with preference for Saginaw area students.

Recipients: 110 \$ 142,000 Awarded

Endowment: \$ 42,421

Loraine Gay was a teacher of mathematics, Director of Counseling, and Dean of Students at South High School in Saginaw. As an educator, Loraine inspired her students to excel in their studies and in their personal lives. Loraine served the alumnae of the U-M through the local Saginaw Club, raising funds for their scholarship program, and on the national Alumnae Council Board.



MARIE D. HARTWIG

HARTWIG, MARIE D.

1929 AB, 1932 BS, 1938 MS – U-M Athletic Department Hall of Honor’s first woman inductee

Established 1982 – Alumnae Council Birthday Greeting Campaign, to provide scholarships for varsity women athletes.

(Administered by the Department of Intercollegiate Athletics since 2002)

Recipients: 23 \$ 64,000 Awarded

Endowment: \$ 121,000

Marie “Pete” Hartwig’s U-M career spanned from 1930 to 1976. Her love of athletics helped her advance intramural sports for women on the U-M campus and culminated in her being appointed U-M’s first associate director for women’s athletics. Prof. Hartwig’s interests and accomplishments were many and varied. She served as director of counselor education for the National Music Camp at Interlochen (MI) for many years, and was a talented musician, an avid sports-woman, and a dedicated educator.

HINSDALE, MARY LOUISA

1890 AM, 1912 Ph.B.. – *A distinguished mind, a warm heart, and flashing humor*

Established 1946 – Gifts from the Mary Markley Board, friends, and former students, for undergraduate scholarships for self-supporting, single women.

Recipients: 60 \$ 44,500 Awarded

Endowment: \$ 8,617

Dr. Hinsdale frequently attended League of Nations meetings in Switzerland, and she traveled to Poland in 1937 to participate in the first meeting of the International Association of University Women. As a member of the American Educational Commission she was invited by the Russian Minister of Education to inspect Russian schools. Her interest in governmental affairs and in world history was a living thing and was passed on as such to her pupils.

MARY LOUISA HINSDALE



“I would like to thank the Alumni Association with enthusiasm for their recognition of the fact that not all capable and talented students have the financial resources available to afford the quality education which The University of Michigan facilitates. Seeking a diverse and valuable student population is extremely important in fostering a campus setting which encourages many ideas and perspectives – and to this end, recognizing students of merit who also have financial constriction is one very important step forward.”

Benjamin, Waltz Recipient

HOST, MARGARET AYERS

*1938 AB, 1940 AM – She adopted the world
Established 1983 – Alumnae Council Birthday
Greeting Campaign and family gifts, for women
graduate students (Administered by Rackham
School of Graduate Studies since 1996)
Recipients: 22 \$ 84,000 Awarded
Endowment: \$ 115,200*

Margaret Host joined the Red Cross during World War II and left the U.S. to serve as director of Red Cross chapters in France, Austria, Germany, and England. Her many other roles include those of teacher, business partner, and fundraiser. She was a driving force in raising the funds to build the Alumni Center, dedicated in the fall of 1982. Margaret holds the distinction of being the first woman elected President of the Alumni Association of the University of Michigan, whereupon her son proclaimed her the best “man” for the job.

LAWLER, ABIGAIL MARIE SHAW

*Family Memorial
Established 1993 – Bequest of her son, James
M. Lawler, 1950 AB, 1957 AM, as a memorial
to his mother and dedicated to assisting needy
and deserving students, with preference for women
from Michigan and Ontario, Canada.
Recipients: 105 \$ 230,000 Awarded
Endowment: \$ 356,493*

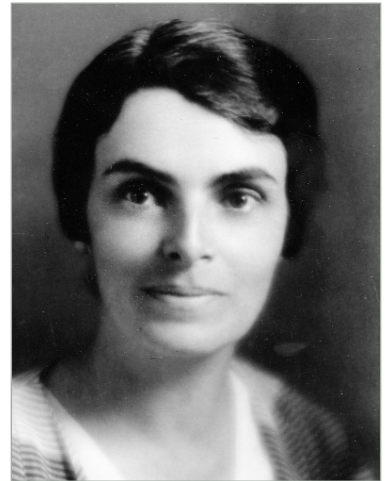
Abigail Shaw was born into poverty in Amherstburg, Ontario in 1897. The eldest of seven children, she became surrogate mother to her siblings when her own mother died in 1915. At 18 years of age she became a source of love and strength to her family and all who knew her.

LLOYD, ALICE CROCKER

*1916 AB – Appointed Dean of Women in 1930
Established 1936 – Gifts from Alumnae and
friends of Dean Lloyd, for women graduate stu-
dents.
Recipients: 129 \$ 151,000 Awarded
Endowment: \$ 31,126*

Following graduation from the U-M, Alice Lloyd moved to New York where she trained as a nurse. Upon her return to Michigan she served several years as a probation officer in Detroit. This background and her deep interest in U-M led her to accept a position at the University in the Advisors of Women Office. As Dean, Alice Lloyd was for many years the senior woman on administrative councils of the University of Michigan. She successfully undertook a major campus expansion to build three new women’s residence halls during World War II, a time of great increase in the number of women seeking admission to the University.

ALICE CROCKER LLOYD



*“This award means I will be able to
complete my graduate studies. I can
now look forward to my last year in
graduate school without the constant
anxiety and worry about how I will
make it. I thank you from the bot-
tom of my heart.”*

Sally, Lawler Recipient



Ten daughters of William Hemphill McCrery and Arabella Bonner McCrery

MCCRERY FUND

Family Tribute – We can still feel our great aunts peering over our shoulders and commenting on our report cards.

Established 1976 – Gifts from Elizabeth A. Kaufman, 1964 MSW, 1989 Ph.D., and her three sisters; granddaughters of Annie Jane McCrery Williams, for merit and need based scholarships for women students.

Recipients: 28 \$ 34,500 Awarded

Endowment: \$ 17,580

The McCrery Fund honors the ten daughters of William Hemphill McCrery and Arabella Bonner McCrery, born in rural Texas between 1869 and 1886. When their father died in 1893, their mother moved them to Corsicana TX. In that small town, the McCrery sisters became leading lights in the literary, musical, and church organizations of the time. Six of the ten sisters spent their adult lives as teachers. With each other's help they amassed degrees and certificates and contributed enormously to the various communities where they taught.

MURFIN, DAISY CHAPIN

1949 Honorary Alumna

Established 1955 – Family memorial gifts and contributions from the Alumnae Council, for merit and need based scholarships for Henderson House residents.

Recipients: 49 \$ 36,000 Awarded

Endowment: \$ 7,434

The wife of a U-M Regent, Daisy Murfin was keenly aware of the financial problems faced by self-supporting women students. She was actively involved in helping students financially and with encouraging them throughout their university careers.

“I am proud to be at the University. I am overwhelmed to realize that there are so many wonderful people that are willing to help if they are given the chance. I hope to one day repay this wonderful and needed gift.”

Gloria, Emergency Aid Recipient

“Thank you very much for your generosity in presenting me with the Alison Tennant Myers Scholarship. I have completed over 100 credit hours as a part-time student... I am highly motivated to maintain my (3.4) GPA and complete my degree. I look forward to being able to give back to my community once I begin my career as a counselor.”

Teresa (UM-Flint), Myers Recipient



ALISON TENNANT MYERS

MYERS, ALISON TENNANT

1941 AB / Staff – A vibrant personality, outstanding leader, and generous to all in need.

Established 1972 – Alumnae Council Birthday Greeting Campaign, for merit and need based scholarships for disadvantaged women students.

Recipients: 42 \$ 54,000 Awarded

Endowment: \$ 31,427

Alison Myers served as Director of Alumnae Activities for 15 years and as Assistant Director of the Alumni Association for an additional seven (1956-1978). Among her many accomplishments, Alison expanded the mission of the Alumnae Council to include all women graduates; successfully promoted the growth of the alumnae scholarship programs through Birthday Greeting campaigns; and fostered the Student Governors Program that connected students, faculty, and alumni with the changing face of the campus.

SANDERS, CLAIRE M.

1904 AB – Pioneer in guidance services for youth and adults.

Established in 1955 – Memorial gifts for merit and need based scholarships for Henderson House residents.

Recipients: 47 \$ 28,500 Awarded

Endowment: \$ 7,018

In 1917, Claire Sanders was elected the first Chairman of the Alumnae Council. As an alumna volunteer she helped raise \$1 million for the construction of the Michigan League, and headed a national campaign for the purchase, remodeling, and furnishing of the first cooperative residence for women on the U-M campus. Professionally, she distinguished herself as Chief Probation Officer of the Detroit Juvenile Court, among many other accomplishments. A Detroit elementary school was named in her honor in 1965.

SEELEY, LAUREL HARPER

1928-29 Architecture – Activist in furthering the interest of women students

Established 1948 – Bequest of Ms. Seeley for merit and need based scholarships for women.

Recipients: 210 \$ 134,500 Awarded

Endowment: \$ 20,100

Laurel Harper left the U-M to continue her study of architecture at the Chicago Institute of Art. She served as director of the Art Department at Washington State Normal for two years. She returned to Ann Arbor following her marriage and became an effective advocate for Adelia Cheever House as a board member.

SMITH, SARA BROWNE

1897 AB – Immigrated from Ireland at the age of 14, first to Iron Mountain and then to Ann Arbor.

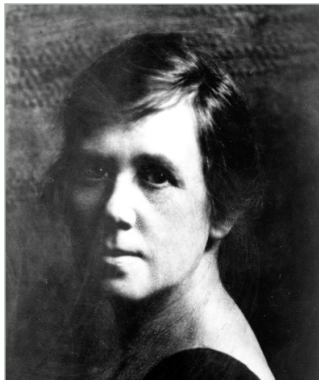
Established 1979 – Gifts from the Sara Brown Smith-Ann Arbor Alumnae Club, and a bequest of a founding member, for merit and need based scholarships for women. (Recipients selected by the Alumnae Council since 1997)

Recipients: 20 \$ 54,000 Awarded

Endowment: \$ 139,532

Sara Smith served as president of the women's league in her senior year at U-M. From 1925-28 she was chair of the Alumnae Council and a moving force of the campaign to build the Michigan League Building. The Alumnae Council honored her with a Service Citation in 1954, and in 1957 she received the Distinguished Service Award from the Alumni Association. Sara's half brother, Charles Mills Gayley (1878 AB), was a professor of English and author of Michigan's alma mater "The Yellow and the Blue."

SARA BROWNE SMITH



VAN DEN BOSCH, ELIZABETH

1971 AM, 1971-86 Staff – A fresh-as-rain sense of humor and creative leader

Established 1986 – Alumnae Council Birthday Greeting Campaign and retirement tributes, for merit and need based scholarships for out-of-state, undergraduate women.

Recipients: 63 \$ 103,000 Awarded

Endowment: \$ 85,175

Under Betty's leadership the Alumnae Council stressed new and equal opportunities for women. They included such innovative programs as the Athena Award honoring distinguished U-M alumnae, the Alumna-in-Residence Program that brings alumnae back to campus to counsel students, Administrative Internships for Women (paid internships with U-M executives), and the Hartwig Scholarship for Varsity Women Athletes.

WELKER BERTHA

Staff – To generations of U-M students, Bert was the Michigan Union.

Established 1965 – Gift from an alumnus, for merit and need based scholarships for women.

Recipients: 42 \$38,000 Awarded

Endowment: \$10,523

Fresh out of high school, Bertha Welker applied for a staff position with the Michigan Union, which was under construction at the time. She stayed on for nearly 50 years—from 1917 to 1966—as secretary to the first four general managers. Her post required that she make arrangements for visiting notables – among them John Phillip Sousa and then-presidential candidate, Senator John F. Kennedy. Bert was standing on the steps of the Union that night in October of 1960 when JFK first announced the idea of a Peace Corps.



ELIZABETH VAN DEN BOSCH

"I would like to thank you and the members of the Alumnae Council for the Elizabeth van den Bosch Scholarship, which helped make it possible for me to graduate from the University of Michigan last Saturday. I am very proud to be now a Michigan alumna and I will never forget the help and support which this University has afforded me. ...Your help has made a significant difference to my academic career."

Daria, van den Bosch Recipient

*Alumni Scholarships administered by the
Alumnae Council Selections Committee*



VIETA VOGHT WOODLOCK

“Your award has given me encouragement and hope since my second year and has made my college years rewarding experience. I am really proud to be a University of Michigan student and I hope one day I can do the same that you have done for so many other students.”

Sun Hae, Woodlock Recipient

WOODLOCK, VIETA VOGHT

*1924 AB – Excellence and generosity of spirit
Established 1972 – Bequest of Ms. Woodlock,
for merit and need based scholarships for women,
with a preference for those majoring in language,
literature, and arts.*

Recipients: 85 \$ 99,000 Awarded
Endowment: \$ 45,204

Vieta Woodlock held the conviction that an education at the University of Michigan placed an individual forever in its debt. She repaid her alma mater by becoming a much admired language teacher and counselor, volunteering her time generously on alumnae activities, and ultimately contributing this very generous gift for scholarships.

ALUMNAE COUNCIL MEMORIAL FUND

*Honoring Alumnae Volunteers
Established 1992 – Gifts from Alumnae
Council and Alumnae Clubs in honor of their
members, for discretionary funds to aid women
students who have unanticipated financial need.
Financial Aid counseling staff recommends stu-
dents for grants when warranted.
Endowment: \$ 59,600*

FORMAN, ROBERT G.

*'59 MPA/Staff – Committed to the egalitarian
ideals of public education
Established 1994 – Alumnae Council Birthday
Greeting campaign, Gifts from U-M Clubs,
Alumni Association Board of Directors, staff,
family and friends upon his retirement in 1994,
to provide scholarships for undergraduate students.
Recipients: 42 \$83,500 Awarded
Endowment: \$198,575*

Throughout his 30-year career (1964-1994) as executive director of the Alumni Association, Bob Forman advocated what he saw as “the great vision of this University to make available a quality education within the means of all of those qualified for admission.” With rising costs making it increasingly difficult for U-M to continue this vision, this fund was established to enlist the volunteer resources of alumni in raising funds to assist in providing student financial aid for undergraduates.

WALTZ, STANLEY G.

*Staff and Honorary Alumnus
Established 1974 – Bequest of Mr. Waltz to
provide scholarships for undergraduates.
Recipients: 64 \$128,000 Awarded
Endowment: \$220,000*

Stanley Waltz was the third General Manager of the Michigan Union, serving from 1933 to 1941. The Union debt was retired during his tenure, allowing the organization to borrow the necessary funds to build the south addition, completed in 1936, that houses the Kuenzel and Welker meeting rooms.

ACKNOWLEDGMENTS

Jean Danzer Cobb, AB '45 AM, for getting this project underway, researching biographical materials, and composing alumnae profiles.

Valerie Lemper Bullen, AB '51, for contributing further research and writing and especially for never giving up on achieving the goal.

Edith Keiley Bletcher – Former Director of Student-Alumni Services, for bringing these profiles together, and for serving as project manager, campus resource, and advocate throughout.

The Alumnae Council extends its gratitude and appreciation to the University of Michigan Alumnae Club of Jackson for providing the funds for this project.

Research and photographs courtesy of the University of Michigan's Bentley Historical Library and the Michigan ALUMNUS magazine.

Design by U-M Marketing Communications

University of Michigan Nondiscrimination Policy

The University of Michigan is an equal opportunity/affirmative action employer.

© 2004 by the Alumnae Council of
the Alumni Association
of the University of Michigan



The Alumnae Council
of the Alumni Association
of the University of Michigan