



AUGUST 3-9, 2026



POLAR BEARS & BELUGA WHALES

Animals of the Arctic | Summer Expedition



Orbridge

Dear University of Michigan Alumni Traveler,

Join fellow alumni and friends for a special opportunity to witness the diverse wildlife and pioneering spirit of the Canadian Arctic in summer.

During summer, visitors can spot polar bears along the local shores before they return to the pack ice when it forms in early winter. Summertime is also when the bears share the area with more than 60,000 beluga whales—who come to feed, mate and give birth in the shallow waters—as well as a wide variety of other wildlife.

This distinguished program features exclusive educational experiences and presentations by professional guides and local naturalists.

To reserve call (866) 639-0079.

Yours for Michigan,



Rachele Neu, '08, MA '12
Senior Travel Program Manager

NOTE: The Alumni Travel program is a member benefit of the Alumni Association. Travelers, regardless of alumni status, must be a member to participate in our trips.

AUGUST 3-9, 2026

RESERVE YOUR SPACE TODAY

Phone: **(866) 639-0079**

Category	Standard Rate	Special Rate*	DEPOSIT AMOUNT PER PERSON: \$850
Double	\$8,499	\$7,995	*Special group rates; limited offer. All rates are per person in U.S. dollars based on double occupancy except where noted as Single. Single availability limited. Unless noted otherwise, airfare is not included. **An exclusive Early Booking Bonus, Expedition Libraries are curated collections of useful resources and background reading tailored to this program. Place your deposit on or before the specified date, and one Expedition Library per room will be sent after receipt of final payment. Libraries may be purchased; call for details. Full Terms & Conditions at terms.orbridge.com . Any payment to Orbridge, LLC constitutes your acceptance of the terms and conditions set out therein, including but not limited to the cancellation and refund terms.
Single	\$11,499	\$10,995	
–rate includes round-trip airfare between Winnipeg and Churchill–			
Optional Excursions	Rate Per Person		
Kayaking Tour	\$235		
AquaGliding Tour	\$195		

CST#2098750-40 WST#602828994

Orbridge takes seriously the responsibility to minimize our global environmental impact. Each year we plant 100,000 trees in U.S. State Forests with afforestation needs as an ongoing initiative among our evolving sustainability efforts. Learn more at orbridge.com/going-green.



Polar Bears & Beluga Whales | Itinerary Highlights *(subject to change)*

Daily activities will be determined by weather, opportunities to view wildlife and other various elements that make up the diverse landscape. This itinerary is a general listing of activities and excursions that may happen during any part of the tour.

(B = Breakfast, L = Lunch, D = Dinner, R = Reception)

Day 1 **ARRIVE IN WINNIPEG, MANITOBA, CANADA** After arriving at Winnipeg Richardson International Airport, transfer to the hotel. This evening meet with fellow travel companions for a private reception and welcome dinner to kick off the exciting adventure ahead.
Overnight: Fort Garry Hotel & Spa (R,D)

Day 2 **WINNIPEG | FLIGHT TO CHURCHILL | CULTURAL AND HERITAGE TOUR** Check out of the hotel this morning followed by the group flight to Churchill. Transfer to Lazy Bear Lodge in time for lunch at the café. Afterward set off on a guided Cultural and Heritage Tour to visit the town's waterfront, Miss Piggy Plane Crash, Polar Bear "Jail" and Cape Merry. Return to the lodge to check in, unpack and familiarize yourself with the property.
Overnight: Lazy Bear Lodge (B,L,D)

Day 3 **CHURCHILL | BOAT TOUR | PRINCE OF WALES FORT | DOG MUSHING** Board Zodiac boats with your Orbridge Expedition Leader for a three-hour tour of the Churchill River/Hudson Bay area to learn more about the 60,000 beluga whales living here. Visit the Prince of Wales Fort, built to protect the business interests of the Hudson's Bay Company. After lunch at the lodge, enjoy time at leisure or join one of two optional excursions. This evening meet an energetic team of sled dogs and their handler for a dog mushing adventure.
Overnight: Lazy Bear Lodge (B,L,D)

Day 4 **CHURCHILL | HUDSON BAY COASTAL TOUR** Explore the Hudson Bay area during a full-day guided water excursion aboard a touring vessel custom designed for wildlife viewing. This shoreline of the Hudson Bay is a rich ecosystem of life, home to a diverse group of animals.
Overnight: Lazy Bear Lodge (B,L,D)

Day 5 **CHURCHILL | ARCTIC CRAWLER™ EXPERIENCE | ITSANITAQ MUSEUM** Board Lazy Bear's Arctic Crawler™ for a guided wildlife excursion. After lunch visit the Itsanitaq Museum dedicated to Inuit culture, and learn about the native people of northern Canada. While downtown enjoy leisure time to explore on your own.
Overnight: Lazy Bear Lodge (B,L,D)

Day 6 **CHURCHILL | FLIGHT TO WINNIPEG** Following breakfast visit the Churchill Northern Studies Centre for a tour and presentation led by a resident scientist. Have lunch, then transfer to the airport for the charter flight to Winnipeg. This evening gather for a farewell reception.
Overnight: The Grand Winnipeg Airport Hotel (B,L,R)

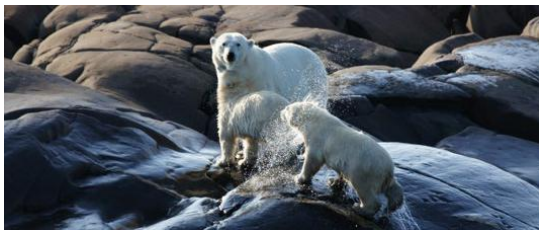
Day 7 **WINNIPEG | DEPART FOR U.S.** After breakfast make the short walk from the hotel to the airport for flights home. (B)



Enriched from the expertise provided by your Orbridge Expedition Leader, you'll bring home a deeper understanding of the flora, fauna, natural history and cultural narrative of the diverse Canadian Arctic.



Activity Level: Guests should be sure-footed on stairs, ramps, and small vessels and able to walk on uneven ground without assistance. Skiffs provide the mode for much of the exploration on this program and guests should be sure-footed to enter/exit the vessel.



What's Included

- 6 nights in ideally situated and comfortable accommodations
- Round-trip airfare between Winnipeg and Churchill
- 6 breakfasts, 5 lunches and 5 dinners (including a special welcome reception and dinner) plus a farewell reception
- Full guiding services of an Orbridge Expedition Leader and a local naturalist
- All excursion transportation and entry fees
- All gratuities

THE MATONABEE

The Matonabee is a 70-foot catamaran touring cruise vessel. It features comfortable seats, large windows, spacious viewing decks, and a fully serviced galley, complete with espresso machine. Don't miss the unique views from the Matonabee's 12 underwater windows. Enjoy the boat's ability to deploy rigid inflatable boats for exploration. Cruise along the coast of the Hudson Bay to places such as Seal River and Button Bay, a favorite gathering spot for polar bears.



THE ARCTIC CRAWLER™

Get up-close access to the wildlife of the tundra aboard this specially designed trekking vehicle. The Arctic Crawler™ features comfortable seating, on-board facilities with flush toilet, large windows that lower for better viewing, and a spacious, fully grated outside rear deck for optimal photography opportunities. With the expertise of the driver and your Orbridge Expedition Leader, you will witness all the stunning natural beauty and diverse wildlife the tundra has to offer.



Orbridge

Orbridge Standard of Excellence

Orbridge understands travel today can be complicated. From cabin or room selection to airport transfers, dietary requests, or pre- or post-tour details—we are dedicated to making your journey seamless and special from the moment you leave home.

Our curated destinations—featuring outstanding properties and ships, meticulously crafted itineraries, and knowledgeable guides, travel directors and expedition leaders—offer life-changing experiences you'll never forget.

Accommodations *(subject to change)*

FORT GARRY HOTEL & SPA

This landmark property in the heart of downtown Winnipeg features high-tech amenities and a mix of contemporary style and Old World elegance.



LAZY BEAR LODGE

This remarkable, handcrafted log lodge is a welcoming, rugged retreat that offers a deep connection to the pristine surroundings. Built with care from locally and sustainably sourced materials, the two-story lodge blends rustic authenticity with modern comfort. Its Douglas fir floors—reclaimed from a Canadian National Railway warehouse built in the early 1920s—and windows once part of a 19th-century Hudson Bay Trading Post lend each space a tangible link to northern heritage.



THE GRAND WINNIPEG AIRPORT HOTEL

Located next to the Winnipeg airport terminal, this boutique property provides beautifully appointed accommodations and thoughtful amenities.





Michigan Alumni Travel
200 Fletcher St.
Ann Arbor, MI 48109

POLAR BEARS & BELUGA WHALES

AUGUST 3-9, 2026

Special Alumni Rate:

Save more than **\$1,000** per couple

30-DAY REFUND GUARANTEE

FREE EXPEDITION LIBRARY
AN EXCLUSIVE EARLY
RESERVATION BONUS

Reserve by
January 23, 2026**

Association's Disclaimer:

The Association is not the Tour Operator. The Association is not responsible for changes of flight times, fare changes, dishonor of airline, hotel or car-rental reservations, delays, losses, injuries, inconveniences, cessation of operations, airline or tour operator bankruptcies, acts of God, or any other event beyond our control. The Association acts only as an independent contractor and not as a principal, agent or joint venture for the airline, hotel, car-rental company, cruise line and/or tour operator named in brochure. As a result, the Association is not responsible for their acts or omissions. The Association acts only as agent for the participants with respect to travel services, and it shall not be responsible for changes of flight times, fare changes, dishonor of airline, hotel or other reservations, injury, damage, loss of baggage, accidents or for the acts or defaults of any person or entity engaged in conveying participants or in carrying out other arrangements of the tour. Further, the Association shall not be responsible for losses or additional expenses of the participant due to sickness, weather, strike, civil unrest, acts of terrorism, quarantine, acts of God, or other causes beyond its control. The Association shall not be responsible for alteration in the itinerary as deemed necessary for carrying out the tour and the right is reserved to substitute hotels of similar quality. The right is further reserved to cancel the tour prior to departure, in which case the entire payment may be refunded without further obligation on its part. The right is also reserved to decline to accept or to retain any person as a member of the tour should such person's health, actions or general deportment impede the operation of the tour or the rights or welfare of the other participants. No refund will be made for the unused portion of any tour. Applicants for participation on this tour accept in full all of the conditions set forth above.

PRSRT STD
U.S. POSTAGE
PAID
PERMIT NO. 825
SAN DIEGO, CA