



APRIL 6-13, 2027

with optional
Mashpi Lodge Pre-Tour and
Machu Picchu and the
Sacred Valley Post-Tour

GALAPAGOS ISLANDS

Orbridge

A LIVING LABORATORY OF NATURE'S DIVERSITY AND ENDLESS WONDERS



Dear University of Michigan Alumni Traveler,

Imagine stepping onto the pristine shores of the enchanting Galapagos Islands, perhaps the most undisturbed spectacle of biological history and evolution in the world. Designated as the first UNESCO World Heritage Site in 1978, the Galapagos Islands are home to a fascinating array of wildlife living in harmony with only occasional humans (as visitors only).

This exciting journey features a day of guided experiences in Quito plus an intimate cruise through the archipelago with up-close access to endemic species and some of The Big 15 including: Galapagos albatross, blue-footed booby, land and marine iguana, sea lion and giant tortoise.

As you embark on various water excursions, venture into secluded inlets and stop for numerous shore landings, you'll feel a deep connection with the remarkable places that have captured the imaginations of explorers and naturalists for centuries.

Accommodations will be on the *Isabela II*, a 40-guest vessel with spacious cabins, local cuisine and a staff that ensures your comfort while you visit this extraordinary destination and its diverse life. Sailing by small ship allows for flexibility in the itinerary to maximize wildlife viewing and can offer access to exclusive ports.

This is a peak-season sailing for alumni association travelers. Space is limited and filling quickly. Make your reservation today by calling (866) 639-0079.

Yours for Michigan,

A handwritten signature in black ink that reads 'Rachele Neu'.

Rachele Neu, '08, MA '12
Senior Travel Program Manager

NOTE: The Alumni Travel program is a member benefit of the Alumni Association. Travelers, regardless of alumni status, must be a member to participate in our trips.

Galapagos Islands | Western Itinerary Highlights *(subject to change)*

Day 1 **EN ROUTE FROM U.S. • ARRIVE IN QUITO, ECUADOR** After an evening arrival in Quito transfer to your five-star boutique hotel—the only Relais & Châteaux property in Quito. Overnight: Casa Gangotena – Quito

Day 2 **QUITO (B,L,R)** Following breakfast and a guided panoramic tour of Quito, stop at a local artisan chocolate shop for an immersive, hands-on experience. Meet with a chocolate maker to gain insight into the history, evolution and traditional uses of cacao beans and the significant economic impact the Ecuadorian chocolate industry has on the country. Then roll up your sleeves for an opportunity to make your own chocolate bars. This evening become acquainted with fellow travelers during a welcome orientation. Overnight: Casa Gangotena – Quito

Day 3 **QUITO • FLIGHT TO BALTRA • SANTA CRUZ: HIGHLANDS • PUERTO AYORA – EMBARKATION (B,L,D)** This morning transfer to Mariscal Sucre International Airport for the approximate two-hour flight to Baltra Airport. Upon arrival transfer to the Baltra Ferry Terminal to ferry to Santa Cruz Island. A short, scenic drive brings you to the Highlands for lunch. Afterward prepare to encounter the magnificent and iconic Galapagos giant tortoise. Your naturalist guide will describe the tortoises' habits and habitat, as well as the ongoing conservation efforts surrounding this astonishing reptile. Later during embarkation take time to unpack and become familiar with your stateroom and the ship's welcoming public spaces. This evening gather for a cocktail before dinner. Overnight: *Isabela II*

Day 4 **BARTOLOMÉ • SANTIAGO: SULLIVAN BAY (B,L,D)** See Bartolomé's spectacular beach. If desired, climb the wooden staircase (less than a half-mile distance) to reach the summit for expansive views of the Galapagos. Set out on a panga boat for a cruise around Pinnacle Rock, formed out of limestone. This active spot is home to playful Galapagos penguins. After lunch explore Sullivan Bay, renowned for its otherworldly volcanic landscape. Back on board the ship embrace valuable leisure time to rejuvenate between adventures. Overnight: *Isabela II*



Day 5 **SANTA CRUZ: DRAGON HILL • SANTIAGO: BUCCANEER COVE (B,L,D)** Enjoy leisure time to stroll Dragon Hill's shoreline or snorkel with hopes of spotting rays and green turtles. Cruise the coastline beside the impressive cliffs of Buccaneer Cove and hear about the pirates, privateers and whalers who set anchor here during the 17th and 18th centuries. During leisure time join a guide for a panga or glass-bottom boat ride, or snorkel or kayak. Overnight: *Isabela II*

Day 6 **ISABELA: PUNTA VICENTE ROCA • FERNANDINA: PUNTA ESPINOZA (B,L,D)** Explore the captivating coast of Isabela by watercraft looking for wildlife. Conclude at Fernandina, the youngest island of the archipelago and arguably one of the most pristine ecosystems on the planet. Spot for hawks, marine iguanas and the famous flightless cormorant. Overnight: *Isabela II*

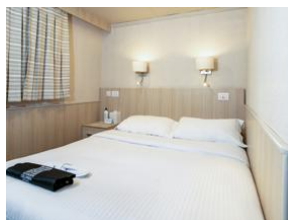
Day 7 **BALTRA – DISEMBARKATION • FLIGHT TO QUITO, ECUADOR (B,L)** Bid a fond adios to the crew prior to departing Baltra for Quito where you will spend your final night. *(Returning flights to the U.S. may begin departing late evening on Day 7 approximately around 9:00 pm and later.)* Overnight: Wyndham Quito Airport

Day 8 **QUITO • DEPART FOR U.S. (B)** After breakfast main program guests departing during the suggested times take a complimentary transfer to the airport for flights home. *If post-tour guests did not depart on Day 7, they will depart Quito for flights to Cusco, Peru, this morning.*

(B = Breakfast, L = Lunch, D = Dinner, R = Reception)

Onboard *Isabela II*

Accommodating only 40 guests, the 183-foot *Isabela II* was designed to provide the ultimate in comfort and adventure while cruising the Galapagos Islands. Guests can savor fresh, delicious international and Ecuadorian cuisine at every meal. Enjoy the spacious public decks, dining room, lounge, library, hot tub and fitness room.



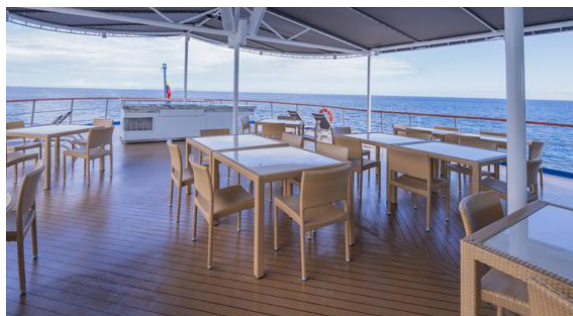
Standard

Full-size bed, window, private bathroom with shower.
128 sq. ft.



Classic Twin

Two twin beds, view window, private bathroom with shower.
139 sq. ft.



Classic Double

Full-size bed, view window, daybed, private bathroom with shower.
139 sq. ft.



Premium Suite

Queen bed, view window, wardrobe, private bathroom with shower.
170 sq. ft.

Activity Level: Guests should be sure-footed on stairs and able to walk at least one mile on rocky, volcanic and uneven ground. Some optional nature hikes will be on irregular and steep terrain. Guests should also be comfortable managing wet beach landings and boarding small vessels. Maximum elevation: 9,350 feet in Quito



Optional Pre-Tour Mashpi Lodge

Immerse yourself in the unparalleled natural beauty and exclusivity of Mashpi Lodge. Delve into the ecological wonders of the rainforest through interactive workshops, enriching nature activities and expert-led discussions that provide valuable insights into the region's unique flora and fauna.

Day +1 **ARRIVE IN QUITO, ECUADOR** Transfer to your hotel to refresh for tomorrow's full day of activities.
Overnight: Casa Gangotena – Quito

Day +2 **QUITO • MASHPI LODGE • MASHPI RESERVE** (B,L,D) After breakfast journey 3.5 hours, arriving at award-winning Mashpi Lodge. Settle into your elegantly appointed room, featuring locally-inspired décor. Floor-to-ceiling windows offer breathtaking views of the surrounding greenery, creating an enchanting ambiance amidst the tranquility of your room. Enjoy lunch, then choose from several optional activities. Take a guided hike to one of several waterfalls or follow the Howler Monkey Trail to the Life Centre, which provides extensive information about the rainforest's incredible biodiversity. Return to the lodge to rejuvenate among the property's five-star amenities. Take a leisurely dip in the open-air rooftop hot tub, or visit the spa for a luxurious treatment (*additional fee applies*) complemented by the soothing sounds of the rainforest.
Overnight: Mashpi Lodge

Day +3 **MASHPI LODGE • MASHPI FOREST CANOPY EXPLORATION** (B,L,D) Today get a bird's-eye view of the Mashpi Forest canopy during a guided ride aboard the *Dragonfly*—an aerial cable car. Go for the entire two-hour ride, or combine the *Dragonfly* experience with a guided nature or waterfall hike. This evening, join fellow travelers to hear a collection of lectures by a resident biologist or naturalist.
Overnight: Mashpi Lodge

Day +4 **MASHPI • QUITO • MAIN PROGRAM BEGINS** (B,L) After breakfast and final activities at the lodge take a group transfer to Quito for lunch before joining the group for the main program.

What's Included

- 1 night at Casa Gangotena in Quito
- 2 nights at award-winning Mashpi Lodge
- 3 breakfasts, 3 lunches and 2 dinners (soft drinks available at all meals)
- Entrance to Mashpi Reserve
- *Dragonfly* aerial tram experience
- Full guiding services including interpretation on all activities and experiences within the reserve
- Specialized lectures and field presentations on research conducted in the reserve by local experts
- Use of rain gear (waterproof poncho, rubber boots), walking sticks, spotting scopes and binoculars
- All transportation for excursions using vehicle transport in the reserve
- All gratuities and portorage
- Airport transfers for guests arriving during the suggested times
- Round-trip group transportation between Quito and Mashpi Lodge



Optional Post-Tour Machu Picchu and the Sacred Valley

Travel to the mist-shrouded mountain citadel of the Incas. Explore the Sacred Valley of the Incas, ride the train through the Urubamba Valley, and break bread in the home of a local Peruvian family.

Day 7 **EVENING FLIGHT TO LIMA, PERU** Depending on prevailing air schedules, guests may take an evening group flight to Lima and overnight near the airport. Overnight: Wyndham Grand Costa del Sol Lima Airport

Day 8 **QUITO OR LIMA • FLIGHT TO CUSCO • SACRED VALLEY (L)** Fly over the Central Andes' peaks and plateaus to the ancient capital of Cusco. Meet your guide and transfer to the Sacred Valley. Enjoy a light lunch before visiting the Yucay Museum of Living Culture for a guided visit. The evening is at leisure. Overnight: Sonesta Posadas del Inca – Yucay

Day 9 **SACRED VALLEY • MACHU PICCHU (B,D)** Journey to the rail station to board the *Vistadome* train to Aguas Calientes. Disembark the train for a bus ride up the mountain. Join a guide to explore ruins of the lower citadel. Learn about the archaeology and history of Intihuatana (the Sun Dial), the Sacred Plaza, and the Temple of the Sun. Return to the hotel for free time before dinner. Overnight: Inkaterra Machu Picchu Pueblo Hotel

Day 10 **MACHU PICCHU (B,D)** Experience a quiet morning at Machu Picchu with exploration from the upper citadel. This afternoon visit Aguas Calientes with time to explore independently. Overnight: Inkaterra Machu Picchu Pueblo Hotel

Day 11 **CUSCO • FLIGHT TO LIMA • DEPART FOR U.S. (B,L)** Return to Ollantaytambo aboard the *Expedition* train. Next visit a private home for lunch followed by a traditional Pachamama ceremony and Archaeo-Music performance. Transfer to the airport for an afternoon flight to Lima. An Orbridge representative will assist with flight connections. A group day room will be provided for comfort between flights. Day Room: Wyndham Grand Costa del Sol Lima Airport

What's Included

- Airfare from Quito to Lima and round-trip internal airfare between Lima and Cusco (including luggage fees and preferred boarding/seating)
- 3 nights premium accommodations and a group day room on departure day
- 3 breakfasts, 2 lunches and 2 dinners
- Fully guided tours and field presentations from local experts
- All ground excursion transportation including the *Vistadome* and *Expedition* trains through the Urubamba Valley
- Luggage portage
- Gratuities to guides, drivers and wait staff for included meals
- Airport assistance for guests arriving and departing during the suggested times



What's Included

- 2 nights at 5-star Casa Gangotena in Quito (or similar) prior to embarkation
- 4 nights aboard the *Isabela II* featuring exploration by panga and glass-bottom boat, naturalist-led hikes and excursions, and evening lectures
- 1 night at Wyndham Quito Airport (or similar) after disembarkation
- 7 breakfasts, 6 lunches and 4 dinners plus a special welcome reception in Quito
- A guided city tour of Quito
- All excursions and presentations
- Complimentary use of shorty wetsuits, snorkeling equipment and ocean kayaks
- Galapagos National Park entrance fee and transit card
- Internal round-trip airfare between Quito and the islands as noted in the itinerary
- Gratuities to local guides, hotel porters and drivers in Quito
- Airport transfers for guests arriving and departing during the suggested times



APRIL 6-13, 2027

Mashpi Lodge Pre-Tour: April 3-6, 2027

Machu Picchu Post-Tour: April 12-16, 2027

RESERVE YOUR SPACE TODAY

Phone: (866) 639-0079

Stateroom Category	Standard Rate	Special Rate*
Standard	\$6,899	\$6,395
Classic Double	\$7,699	\$7,195
Classic Twin	\$8,199	\$7,695
Premium Suite	\$10,499	\$9,995
Single (Standard)	\$11,799	\$11,295

Mashpi Lodge Pre-Tour	Standard Rate	Special Rate*
Double	\$2,699	\$2,495
Single	\$3,699	\$3,495

Machu Picchu Post-Tour	Standard Rate	Special Rate*
Double	\$4,599	\$4,395
Double Deluxe	\$5,499	\$4,995
Single	\$6,599	\$6,395
Single Deluxe	\$7,399	\$7,195

– rate includes round-trip internal airfare to/from Cusco –

Deluxe package includes room upgrades at Sonesta Posada del Inca and Inkaterra Machu Picchu Pueblo Hotel. Availability limited.

DEPOSIT AMOUNT PER PERSON

\$500 pre-tour • \$850 main tour • \$500 post-tour

*Special group rates; limited offer. All rates are per person in U.S. dollars based on double occupancy except where noted as Single. Single availability limited. Unless noted otherwise, airfare is not included.

**An exclusive Early Booking Bonus, Expedition Libraries are curated collections of useful resources and background reading tailored to this program. Place your deposit on or before the specified date, and one Expedition Library per room will be sent after receipt of final payment. Libraries may be purchased; call for details. Full Terms & Conditions at terms.orbridge.com. Any payment to Orbridge, LLC constitutes your acceptance of the terms and conditions set out therein, including but not limited to the cancellation and refund terms.

CST#2098750-40 WST#602828994

Orbridge takes seriously the responsibility to minimize our global environmental impact. Each year we plant 100,000 trees in U.S. State Forests with afforestation needs as an ongoing initiative among our evolving sustainability efforts. Learn more at orbridge.com/going-green.





Michigan Alumni Travel
200 Fletcher St.
Ann Arbor, MI 48109

GALAPAGOS ISLANDS

APRIL 6-13, 2027

Special Alumni Rate:

Save more than **\$1,000** per couple

30-DAY REFUND GUARANTEE

FREE EXPEDITION LIBRARY
AN EXCLUSIVE EARLY
RESERVATION BONUS

Reserve by
July 17, 2026**

Association's Disclaimer:

The Association is not the Tour Operator. The Association is not responsible for changes of flight times, fare changes, dishonor of airline, hotel or car-rental reservations, delays, losses, injuries, inconveniences, cessation of operations, airline or tour operator bankruptcies, acts of God, or any other event beyond our control. The Association acts only as an independent contractor and not as a principal, agent or joint venture for the airline, hotel, car-rental company, cruise line and/or tour operator named in brochure. As a result, the Association is not responsible for their acts or omissions. The Association acts only as agent for the participants with respect to travel services, and it shall not be responsible for changes of flight times, fare changes, dishonor of airline, hotel or other reservations, injury, damage, loss of baggage, accidents or for the acts or defaults of any person or entity engaged in conveying participants or in carrying out other arrangements of the tour. Further, the Association shall not be responsible for losses or additional expenses of the participant due to sickness, weather, strike, civil unrest, acts of terrorism, quarantine, acts of God, or other causes beyond its control. The Association shall not be responsible for alteration in the itinerary as deemed necessary for carrying out the tour and the right is reserved to substitute hotels of similar quality. The right is further reserved to cancel the tour prior to departure, in which case the entire payment may be refunded without further obligation on its part. The right is also reserved to decline to accept or to retain any person as a member of the tour should such person's health, actions or general deportment impede the operation of the tour or the rights or welfare of the other participants. No refund will be made for the unused portion of any tour. Applicants for participation on this tour accept in full all of the conditions set forth above.

PRSRT STD
U.S. POSTAGE
PAID
PERMIT NO. 825
SAN DIEGO, CA